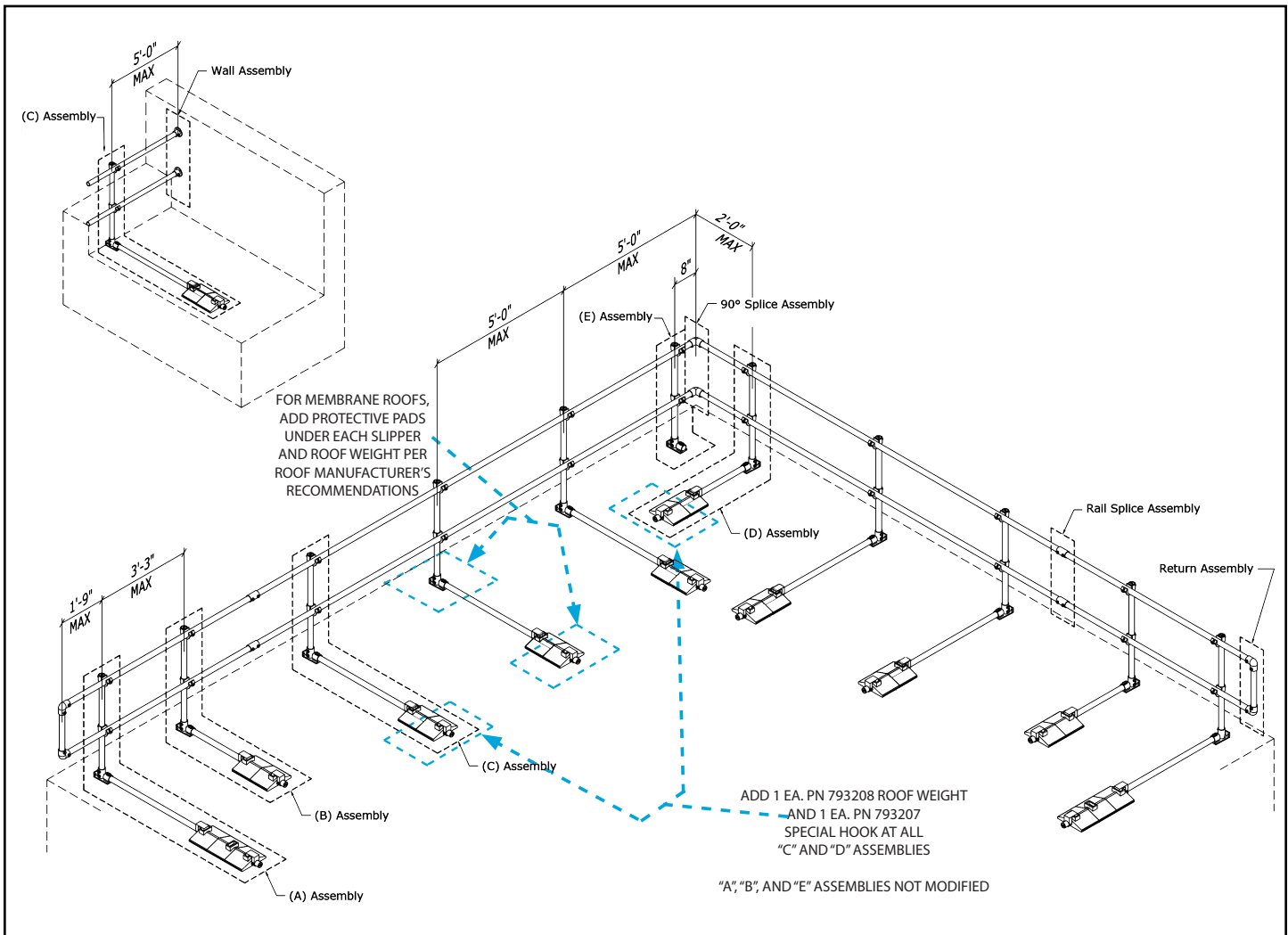


DynaRound RG Roof Guard High Wind System



Configuration Number	Configuration	Max Wind Speed (mph)	Max Post Spacing (ft)	Notes (2)
1	Standard	80	5	Base Configuration
2	High Wind	100	5	Add an additional Roof Weight (793208) and Special Hook (793207) to the end of all "C" & "D" Assemblies.

NOTES:

1. The DynaRound RG Roof Guard High Wind system uses an additional Roof Weight (793208) and Special Hook (793207) on the end of all "C" & "D" Assemblies.
2. Protective pads under slippers and roof weights should be installed as required per roof manufacturer's recommendations.
3. For the high wind speed system configuration, a minimum 3" parapet wall is required.
4. The wind speed resistance is measured at 3 second peak gusts, not sustained wind speeds at 10m/33' (32.8084) above ground.
5. The high wind system applies to buildings of all heights.



Phone:800-852-6013



www.tremcoroofing.com



SafetySolutions@tremcoinc.com



Roofing & Building Maintenance